



DATA SHEET

Ultra-micro Current Transformer

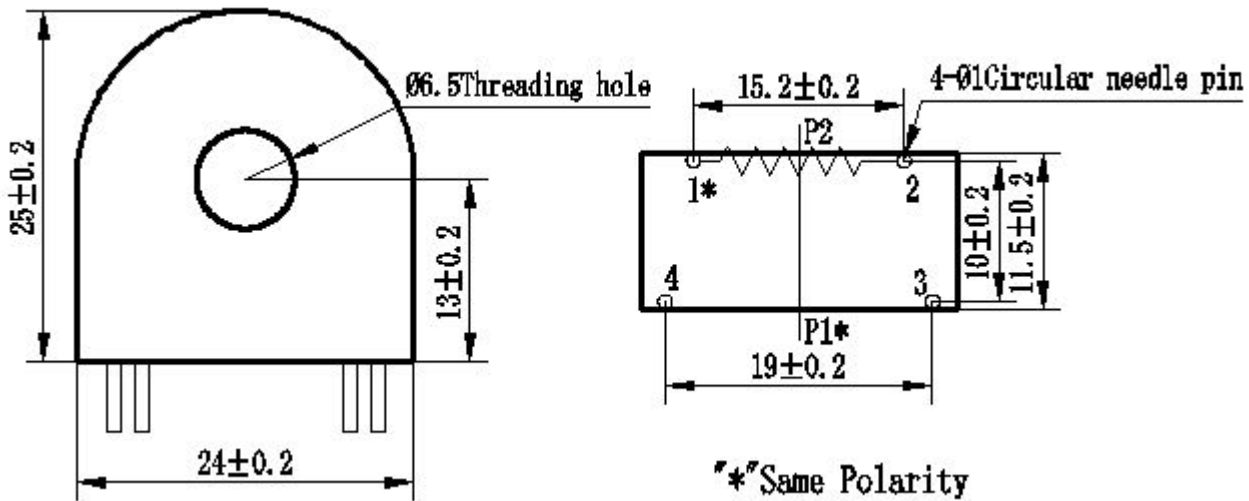
PN: CMCT116A	IPN=5A
---------------------	---------------

Feature & Applications

- Small size
- High accuracy
- Good consistency.
- Used for current and power measurement



Structural Parameter :



Remarks: Primary input: straight- through type(make the measured circuit be through the hole)
 Secondary output: 1、 2pin empty pins: 3、 4pin

Front view

Bottom view

The Main Technical Parameters :

Model	CMCT116A
Rated input current	5A
Rated output current	2mA
Turns ratio	2500:1
Phase angle error	$\leq 20'$ (Input 1A, sampling resistor 100Ω)
Linear range	0~70A (sampling resistor 100Ω)



Linearity	0.1% (5%dot~120%dot)
Permissible error	-0.2%≤ f ≤+0.2% (Input 1A, sampling resistor 100Ω)
Isolation voltage	4500V
Application	Current and power measurement
Encapsulation	Epoxy
Installation	PCB mounting (Pin Length>3mm)
Operating temperature	-40°C~+85°C

Direction For Use:

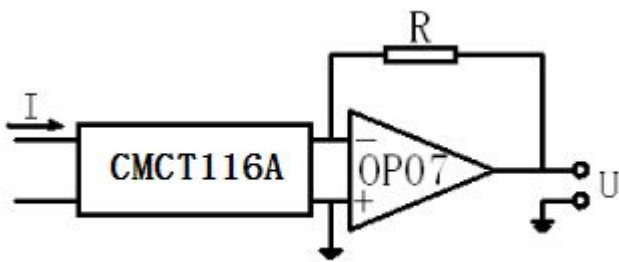
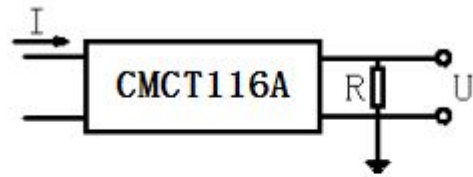


Figure I



$$U = \frac{I}{2500} \cdot R$$

I: input current
R: sampling resistor
U: sampling voltage

Figure II

1. CMCT116A used for measurement. Typical usage is shown in Figure 1 and Figure 2. R is a sampling resistor.
2. Empty pin can not be grounded.

